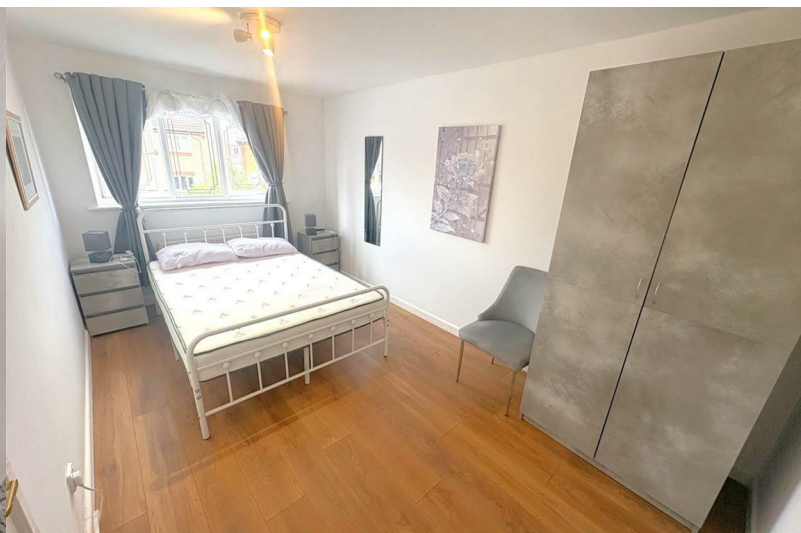
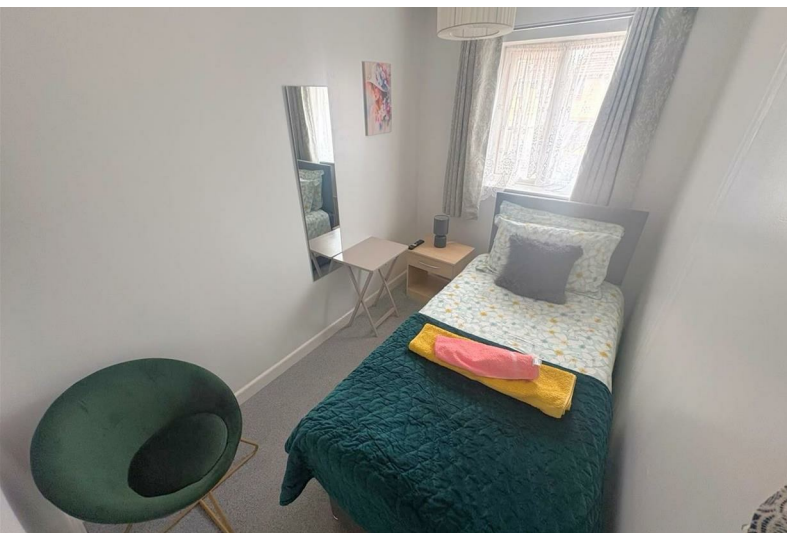




## Sherwood Close

, Corby, NN17 2YH

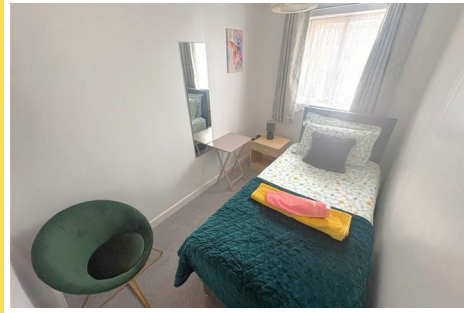
£1,850 Per month



# Sherwood Close

, Corby, NN17 2YH

£1,850 Per month



Entrance

Guest W/C

Livingroom

Kitchen

Bedroom one with en suite

Bedroom Two

Shower Room

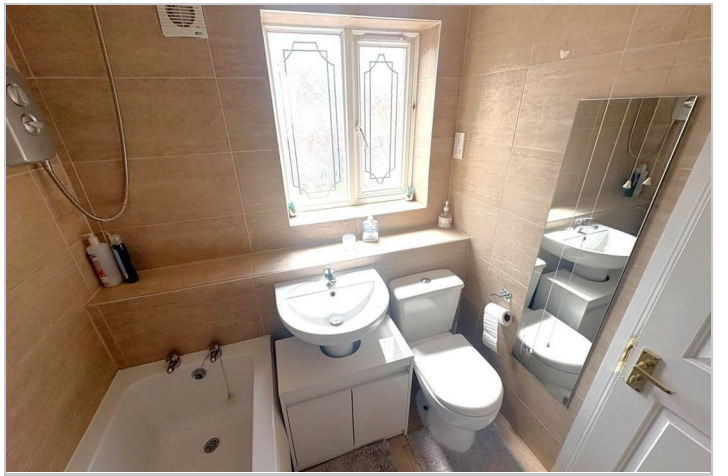
Bedroom Three

Bedroom Four

Bedroom Five

Bedroom Six with en suite

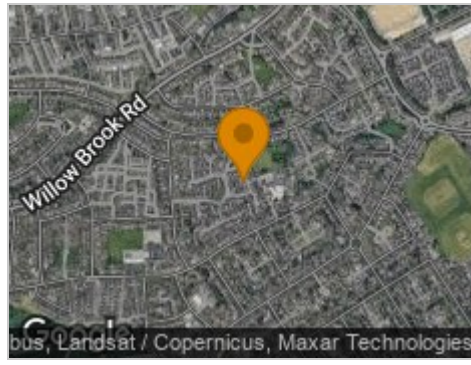
Annex Room Seven with En suite



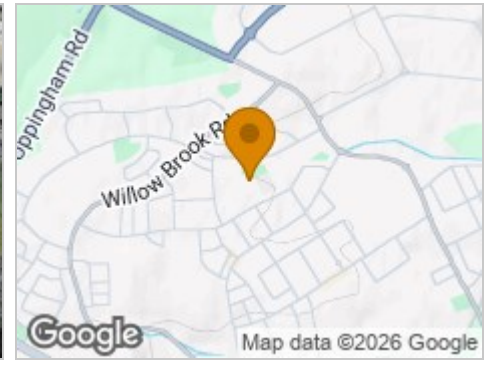
### Road Map



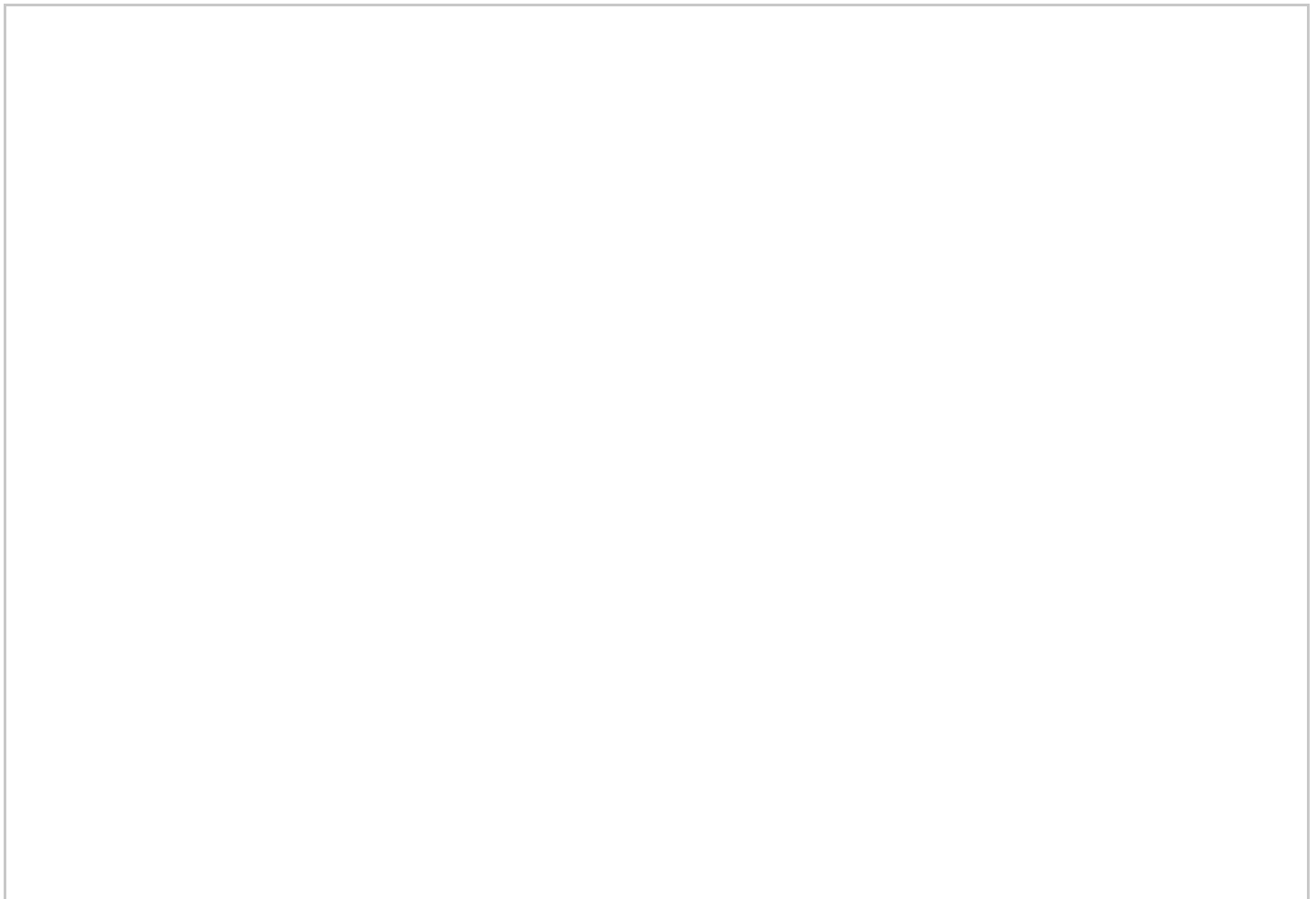
### Hybrid Map



### Terrain Map



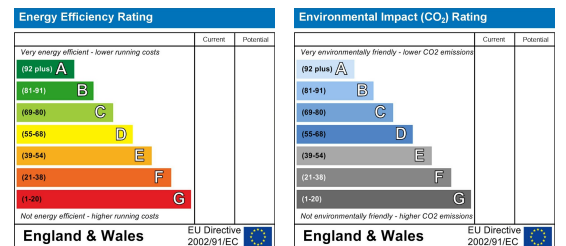
### Floor Plan



### Viewing

Please contact our Stuart Charles Estate Agents Office on 01536 234264 if you wish to arrange a viewing appointment for this property or require further information.

### Energy Efficiency Graph



These particulars, whilst believed to be accurate are set out as a general outline only for guidance and do not constitute any part of an offer or contract. Intending purchasers should not rely on them as statements of representation of fact, but must satisfy themselves by inspection or otherwise as to their accuracy. No person in this firm's employment has the authority to make or give any representation or warranty in respect of the property.